



LO SCENARIO

elaborato tecnico

Fig. 1 - Functional Urban Areas (FUAs) in Europa

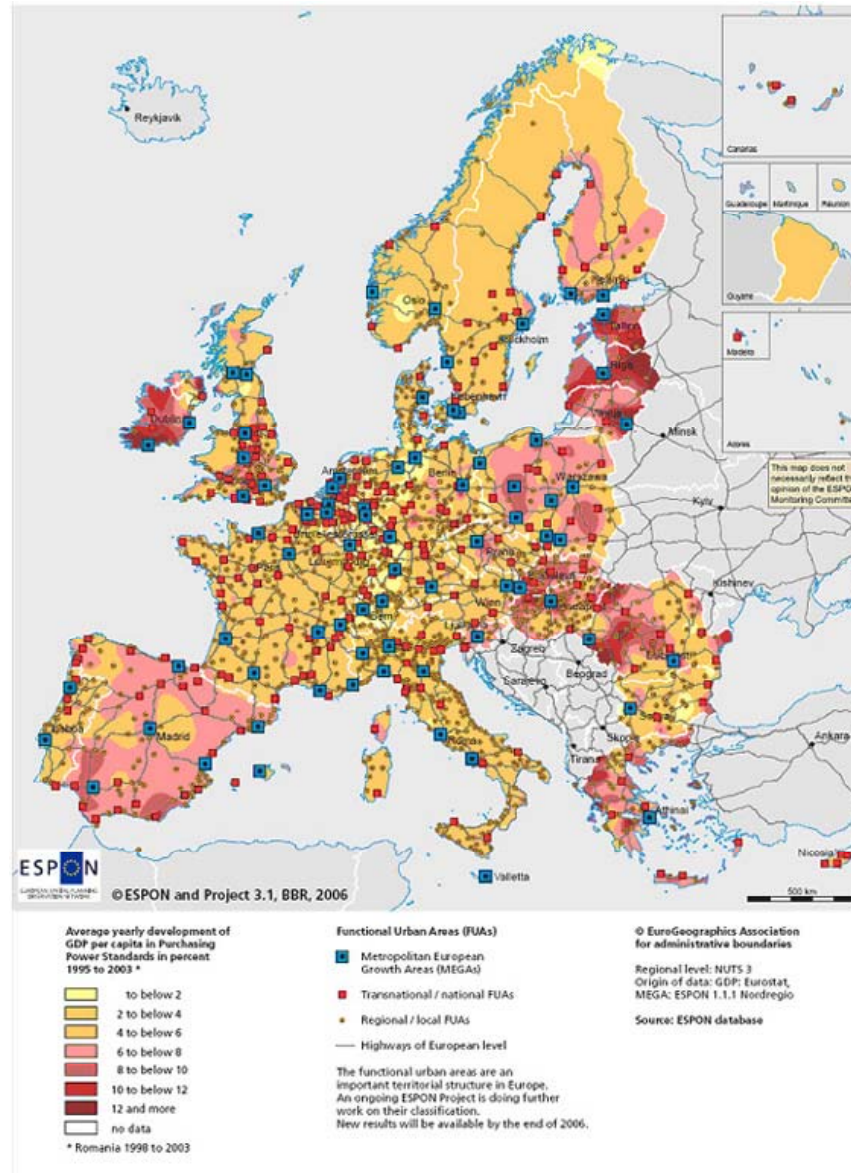
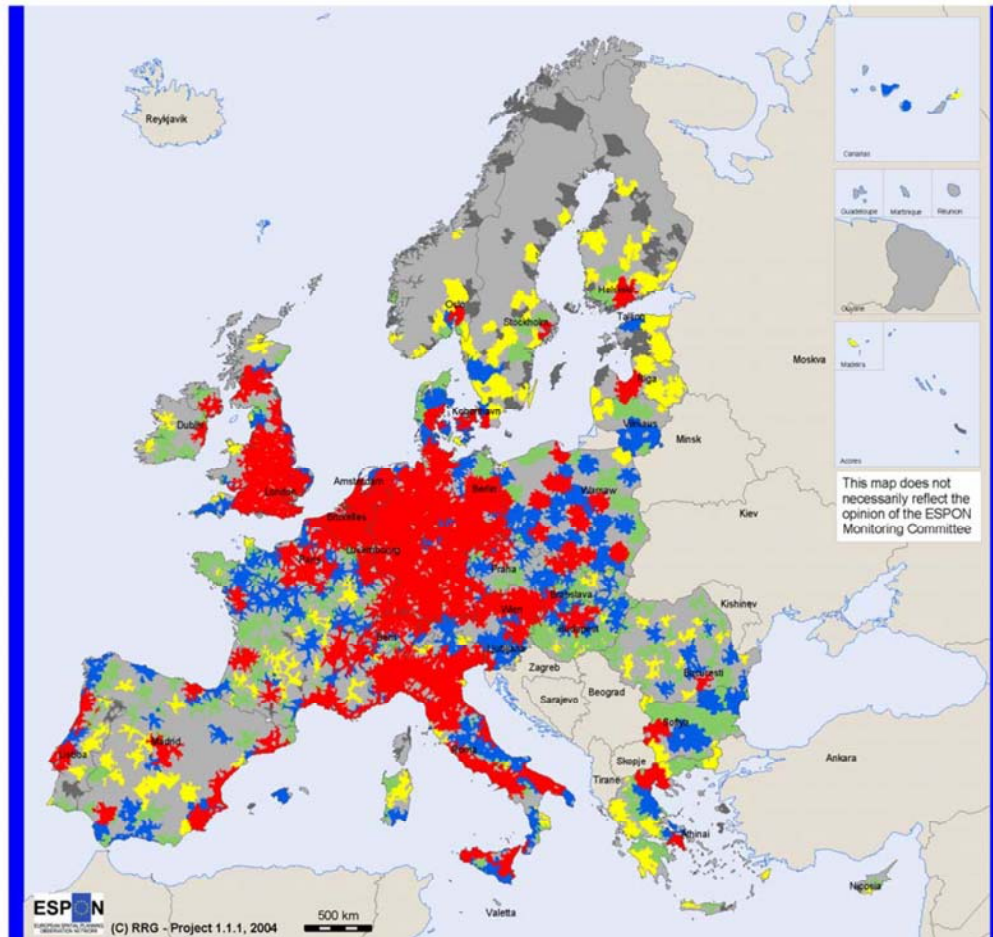


Fig. 2 - Potential Urban Strategic Horizons (PUSH) in Europa



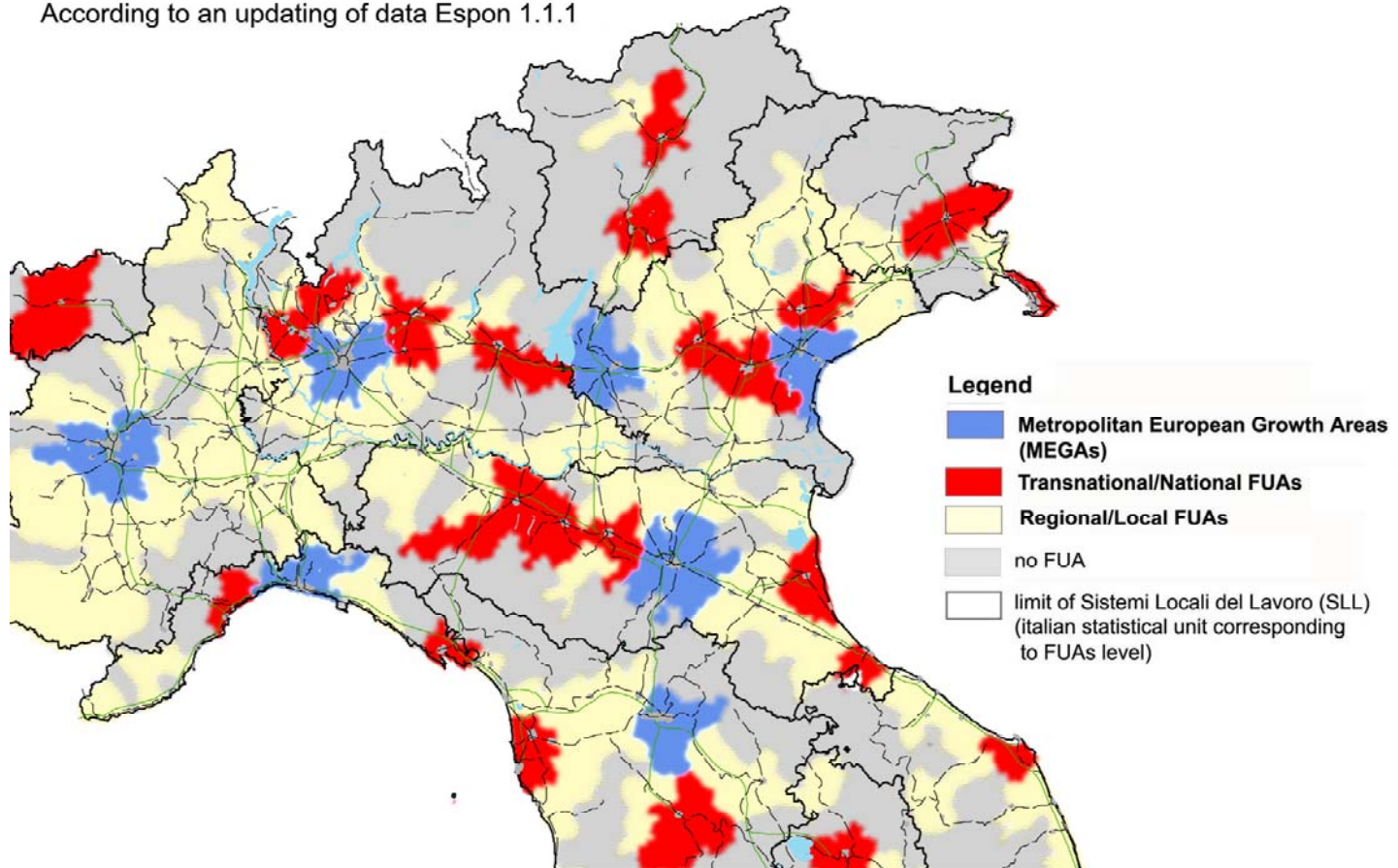
Geographical Base: Eurostat GISCO

Inhabitants

- 1,000,000 < ...
- 500,000 - 1,000,000
- 250,000 - 500,000
- 100,000 - 250,000
- ... < 100,000

Italy - Typology of Functional Urban Areas (FUAs)

According to an updating of data Espon 1.1.1



Source: EUROSTAT, National Statistical Office, National experts

Fig. 4 II "Pentagono" Europeo

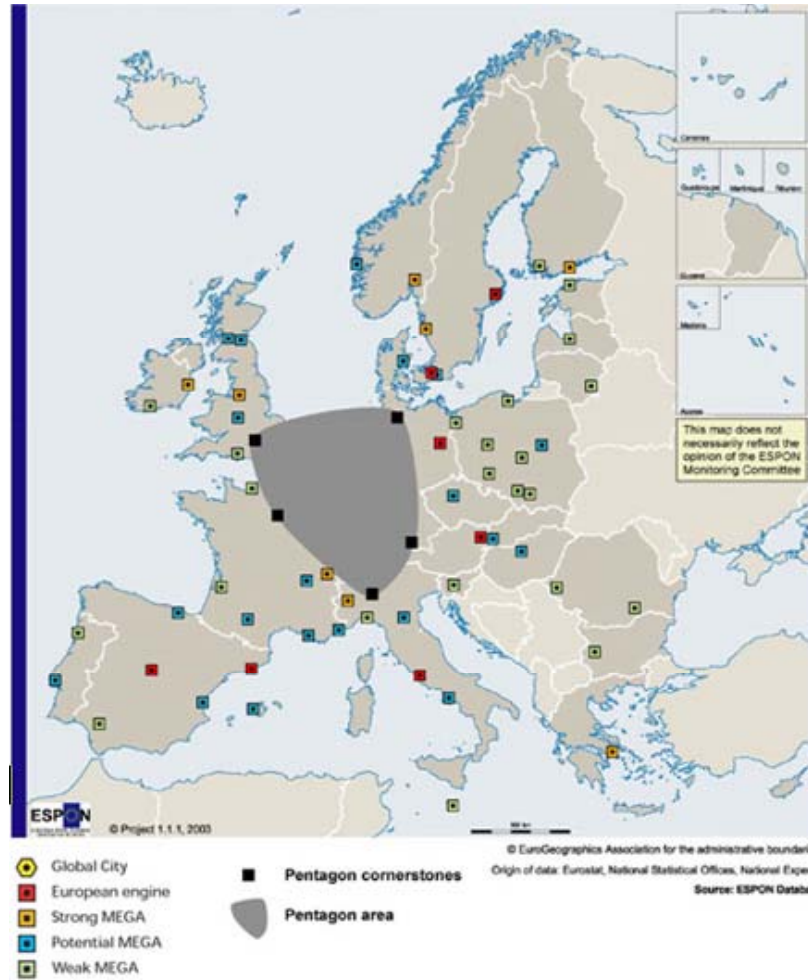


Fig. 5 – Raccomandazioni sulle politiche di trasporto

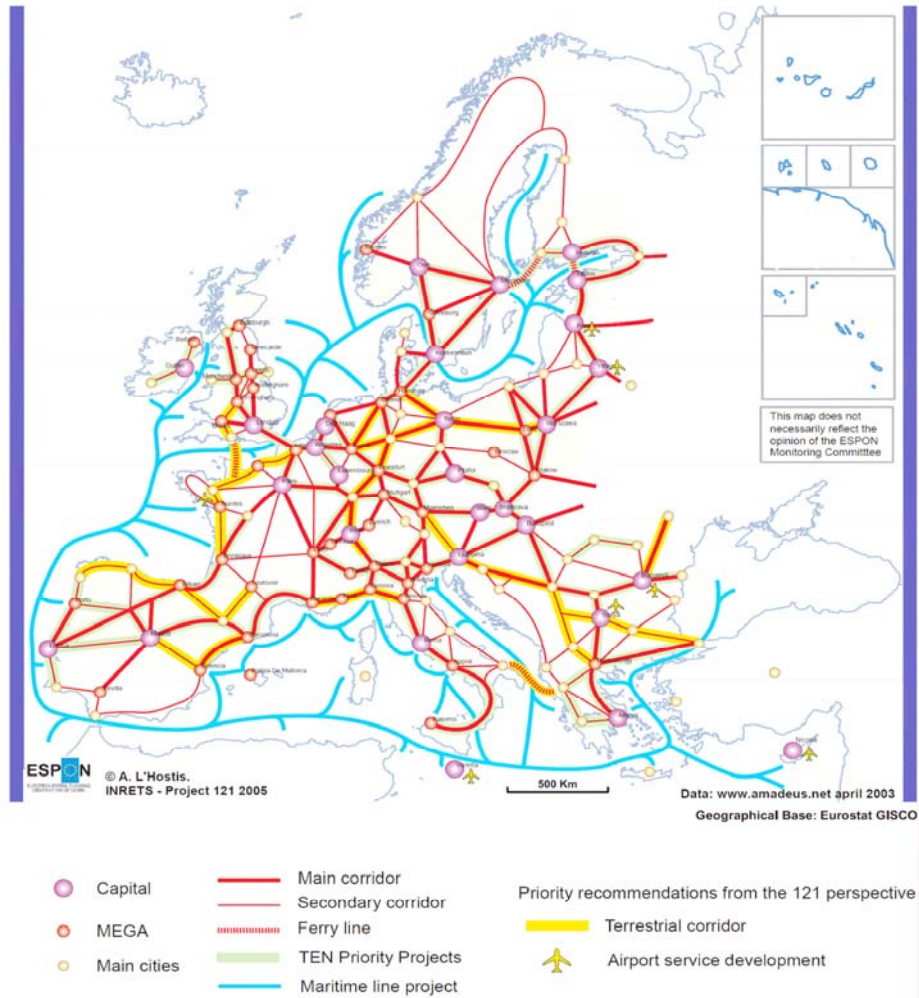
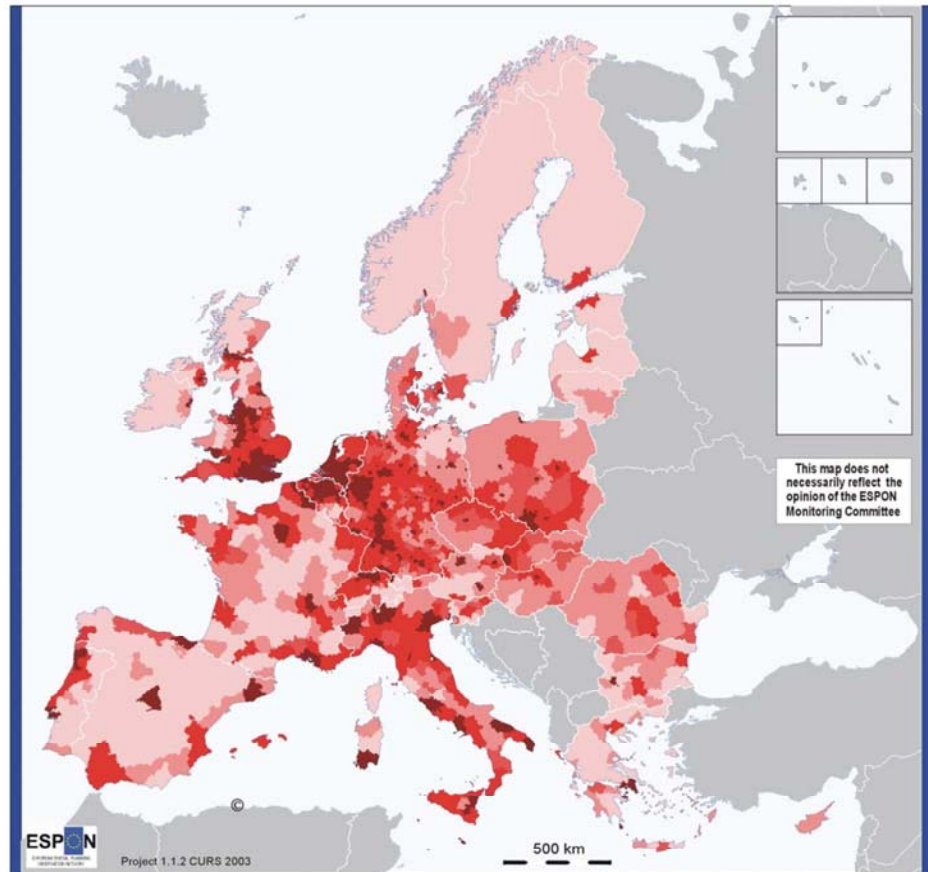


Fig. 7 – Densità di popolazione in Europa. Anno 1999



Population density in NUTS3 regions in 1999

289	-	20 200	(371 NUTS3 regions)
117	-	288	(371)
98	-	116	(75)
56	-	97	(251)
0	-	55	(251)

© EuroGeographics Association for the administrative boundaries

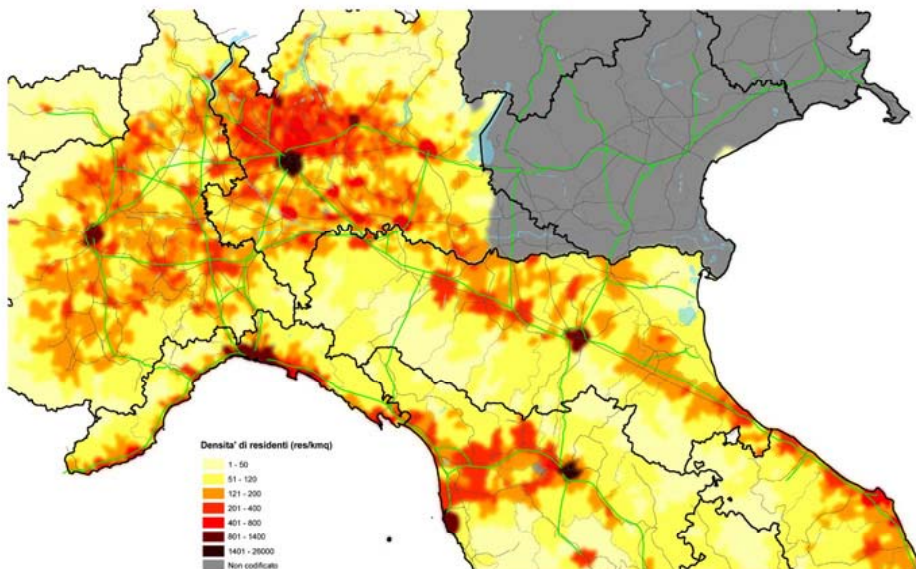
Origin of data: EU15 and CC's: Eurostat
Norway and Switzerland: National
Statistical Offices

Source: ESPON Data Base

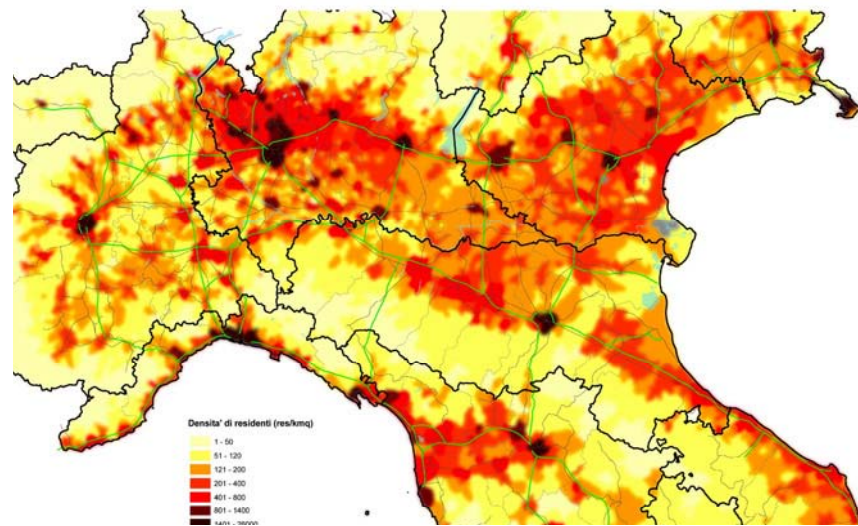
The average population density in EU25+4 is 107 inhabitants/km².

Fig. 8.- Densità di residenti anni 1861 – 1951 – 1971 - 2001

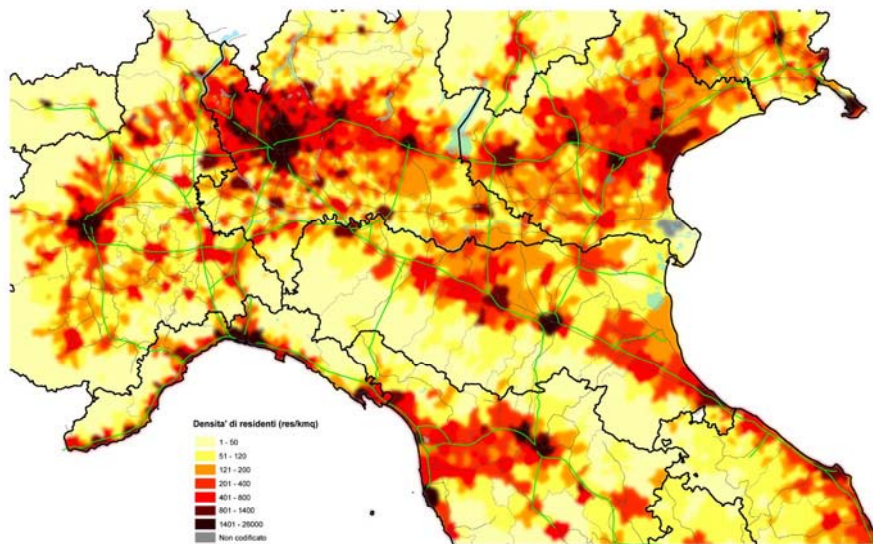
Anno 1861



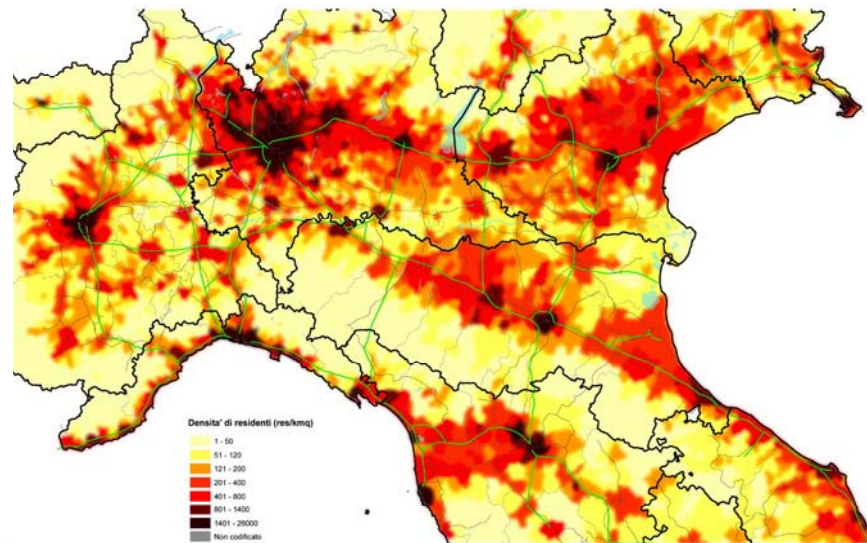
Anno 1951



Anno 1971

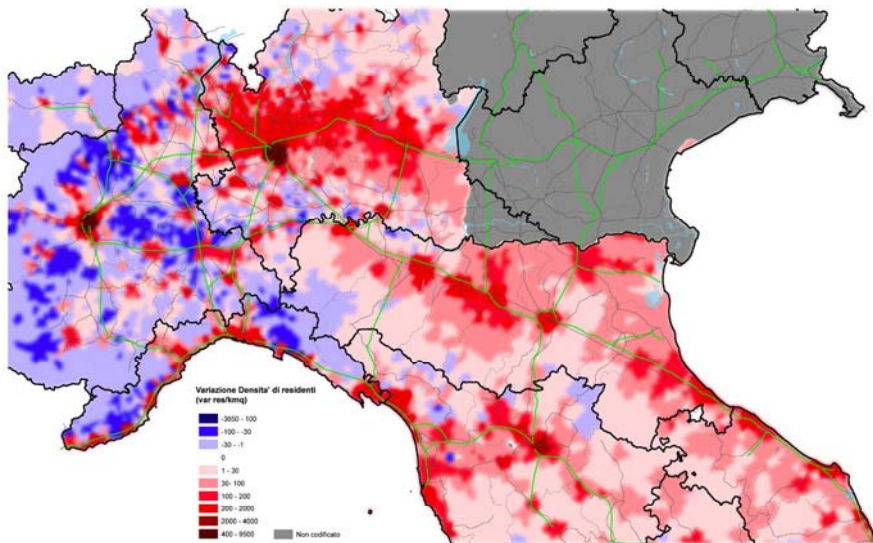


Anno 2001

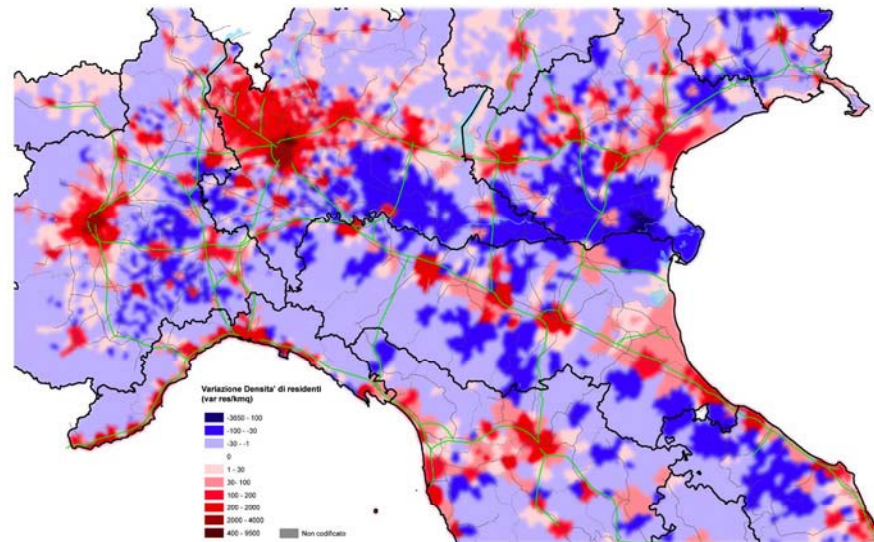


- *Variazione densità di residenti periodi: 1861-1951, 1951-1971, 1971-2001*

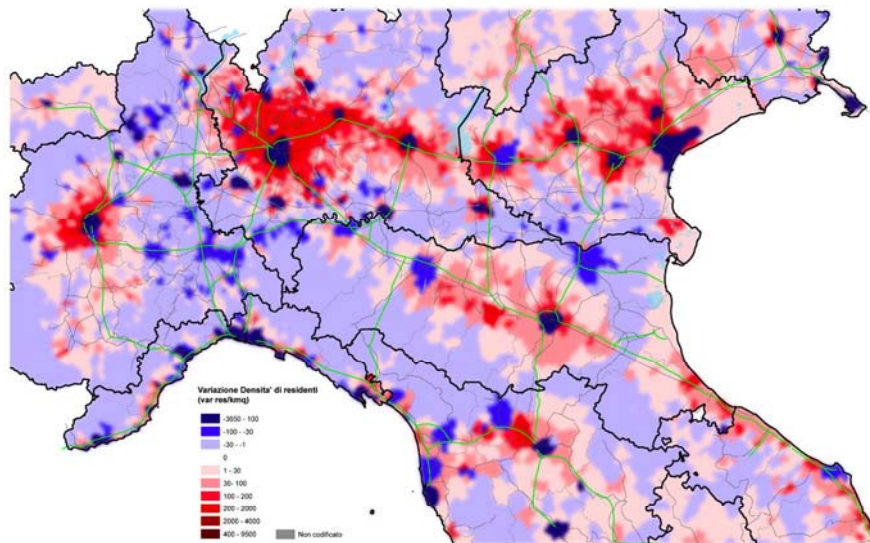
Periodo 1861-1951



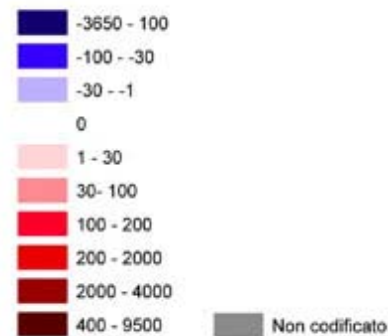
Periodo 1951-1971



Periodo 1971-2001

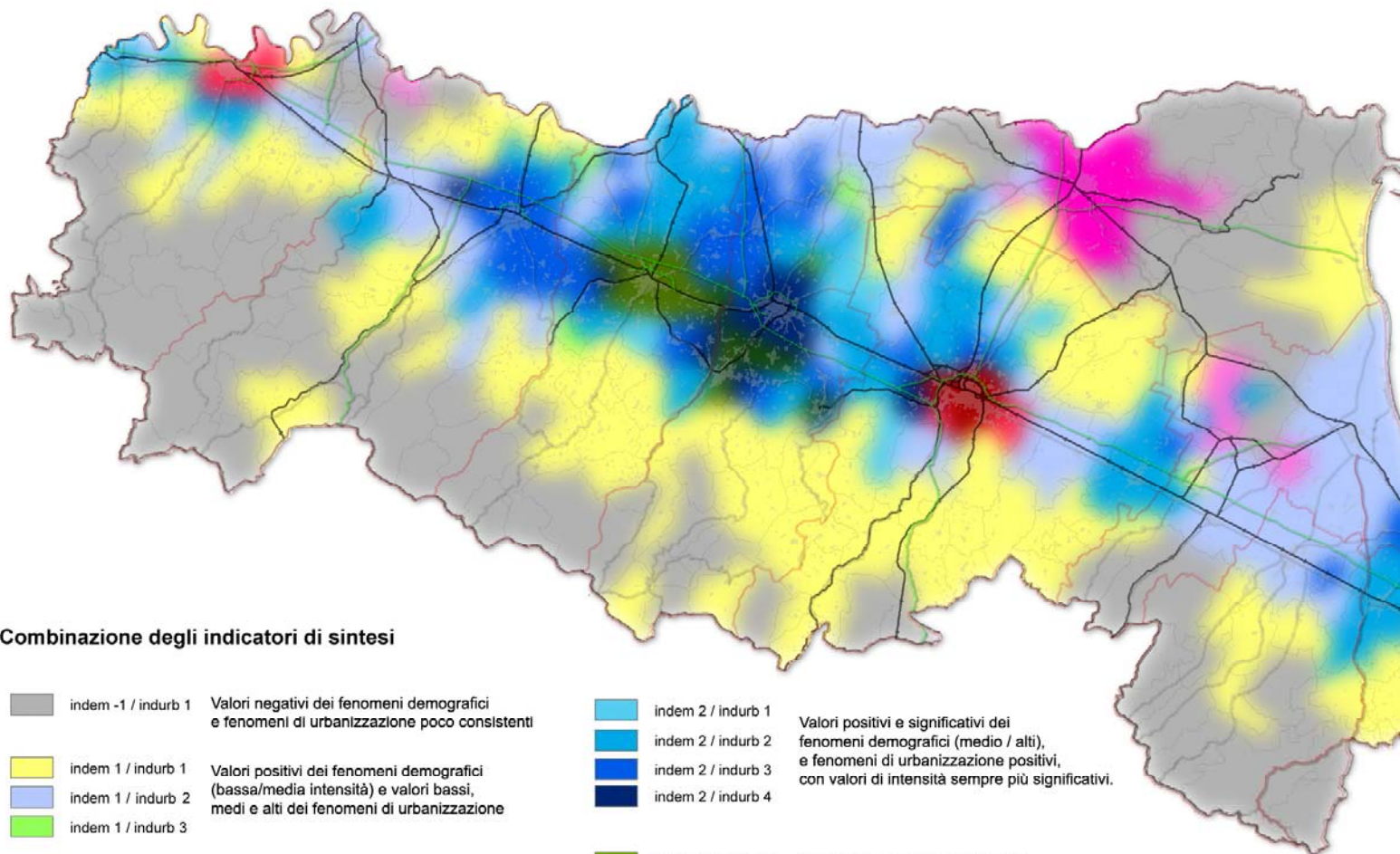


Variazione Densita' di residenti (var res/kmq)


















DINAMICA DEI RESIDENTI ED EVOLUZIONE DEL TERRITORIO URBAN

(ANALISI MULTICRITERIA - COMBINAZIONE DEGLI INDICATORI DI S



Combinazione degli indicatori di sintesi

	indem -1 / indurb 1	Valori negativi dei fenomeni demografici e fenomeni di urbanizzazione poco consistenti
	indem 1 / indurb 1	Valori positivi dei fenomeni demografici (bassa/media intensità) e valori bassi, medi e alti dei fenomeni di urbanizzazione
	indem 1 / indurb 2	
	indem 1 / indurb 3	
	indem -1 / indurb 2	Valori negativi dei fenomeni demografici, anche molto significativi, e fenomeni di urbanizzazione consistenti (medi/alti)
	indem -1 / indurb 3	
	indem -1 / indurb 4	
	indem -2 / indurb 4	

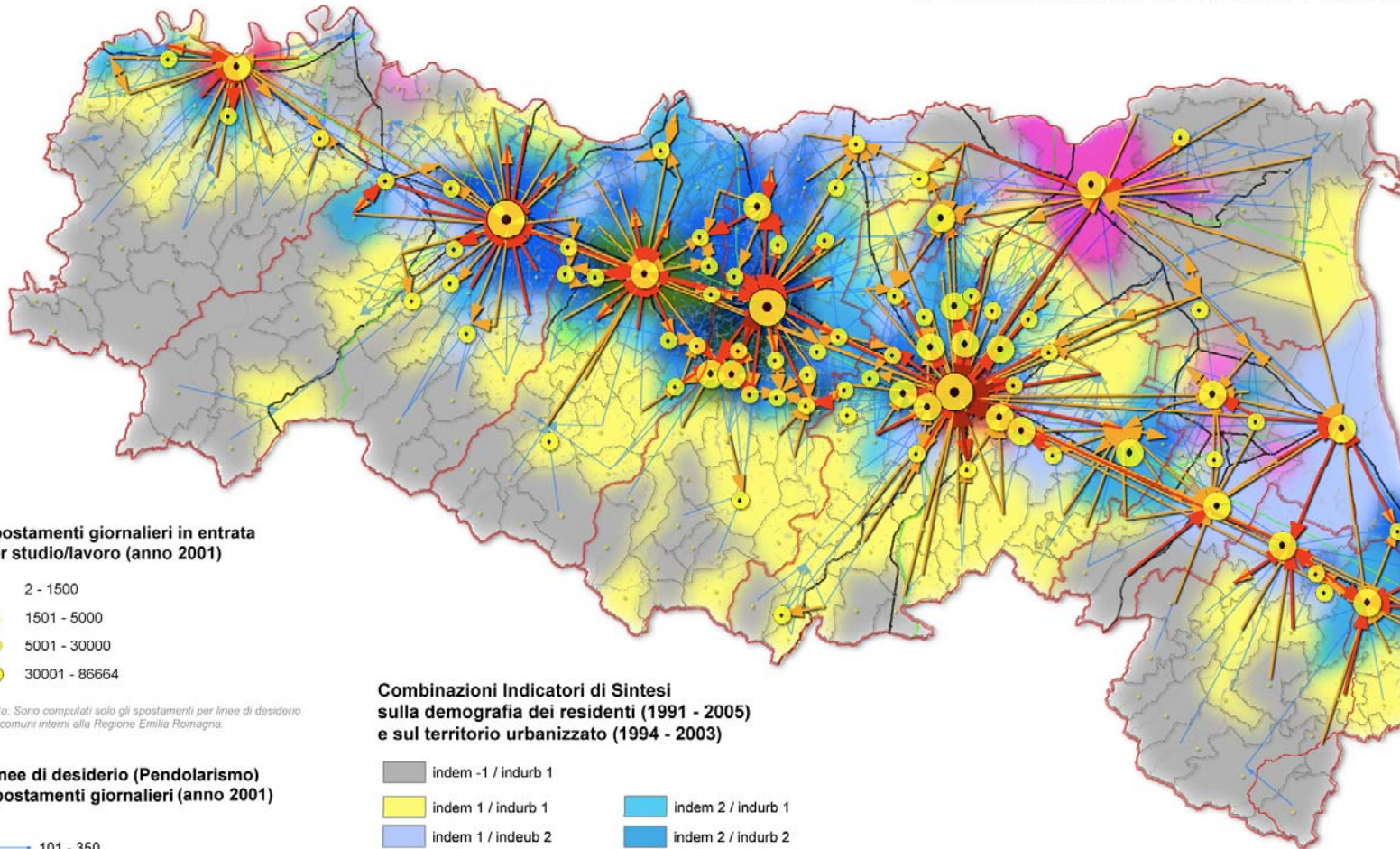
	indem 2 / indurb 1	Valori positivi e significativi dei fenomeni demografici (medio / alti), e fenomeni di urbanizzazione positivi, con valori di intensità sempre più significativi.
	indem 2 / indurb 2	
	indem 2 / indurb 3	
	indem 2 / indurb 4	
	indem 3 / indurb 2	Valori molto positivi e significativi dei fenomeni demografici (molto alti), e fenomeni di urbanizzazione anch'essi molto positivi, alti e sempre più significativi
	indem 3 / indurb 3	
	indem 3 / indurb 4	

Indem: Indicatore di sintesi sulla demografia densità di residenti; 1991 - 2005)

Indurb: Indicatore di sintesi sul territorio urbanizzato (indice di territorio urbanizzato; 1994 - 2003)

Elaborazioni ERVET su Fonte d

DINAMICA DEI RESIDENTI ED EVOLUZIONE DEL TERRITORIO URBANO PENDOLARISMO E CENTRI DI POLARITÀ



Spostamenti giornalieri in entrata per studio/lavoro (anno 2001)

- 2 - 1500
- 1501 - 5000
- 5001 - 30000
- 30001 - 86664

Nota: Sono computati solo gli spostamenti per linee di desiderio tra comuni interni alla Regione Emilia Romagna.

Linee di desiderio (Pendolarismo) Spostamenti giornalieri (anno 2001)

- 101 - 350
- 351 - 1000
- 1001 - 3000
- 3001 - 7038

Nota: Sono rappresentati solo gli spostamenti per linee di desiderio con più di 100 spostamenti giornalieri, tra comuni interni alla Regione Emilia Romagna.

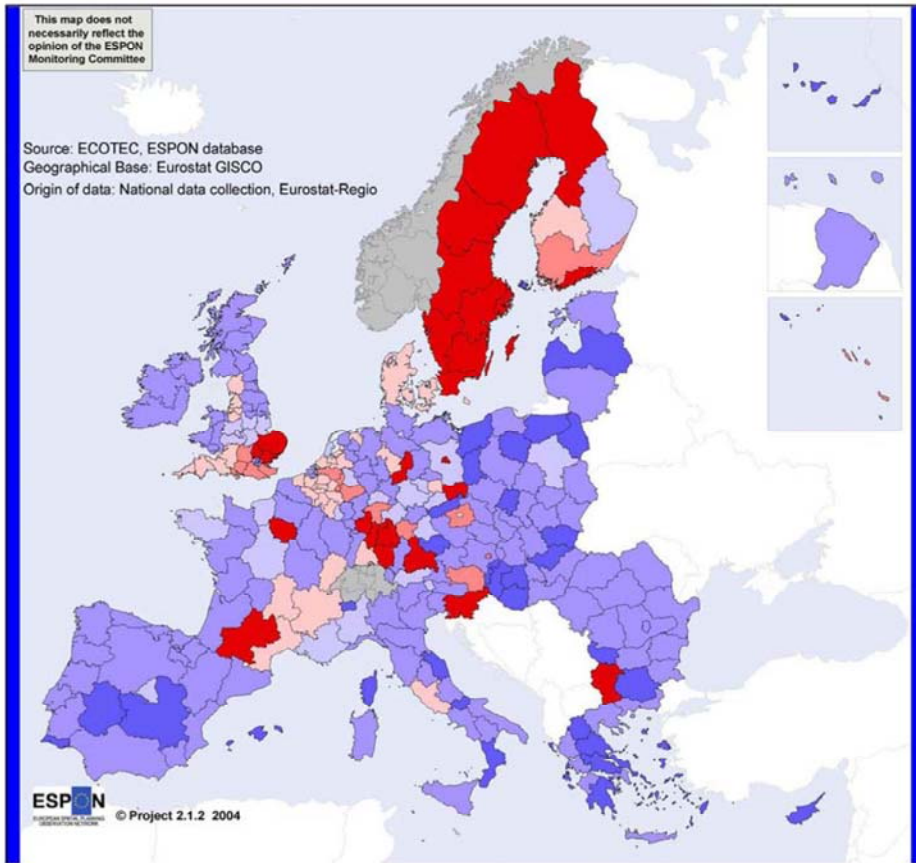
Combinazioni Indicatori di Sintesi sulla demografia dei residenti (1991 - 2005) e sul territorio urbanizzato (1994 - 2003)

■ indem -1 / indurb 1	■ indem 2 / indurb 1
■ indem 1 / indurb 1	■ indem 2 / indurb 2
■ indem 1 / indeub 2	■ indem 2 / indurb 3
■ indem 1 / indurb 3	■ indem 2 / indurb 4
■ indem -1 / indurb 2	■ indem 3 / indurb 2
■ indem -1 / indurb 3	■ indem 3 / indurb 3
■ indem -1 / indurb 4	■ indem 3 / indurb 4
■ indem -2 / indurb 4	

Indem: Indicatore di sintesi sulla demografia (densità di residenti; 1991 - 2005)

Indurb: Indicatore di sintesi sul territorio urbanizzato (indice di territorio urbanizzato; 1994 - 2003)

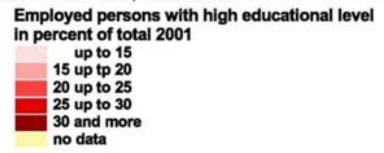
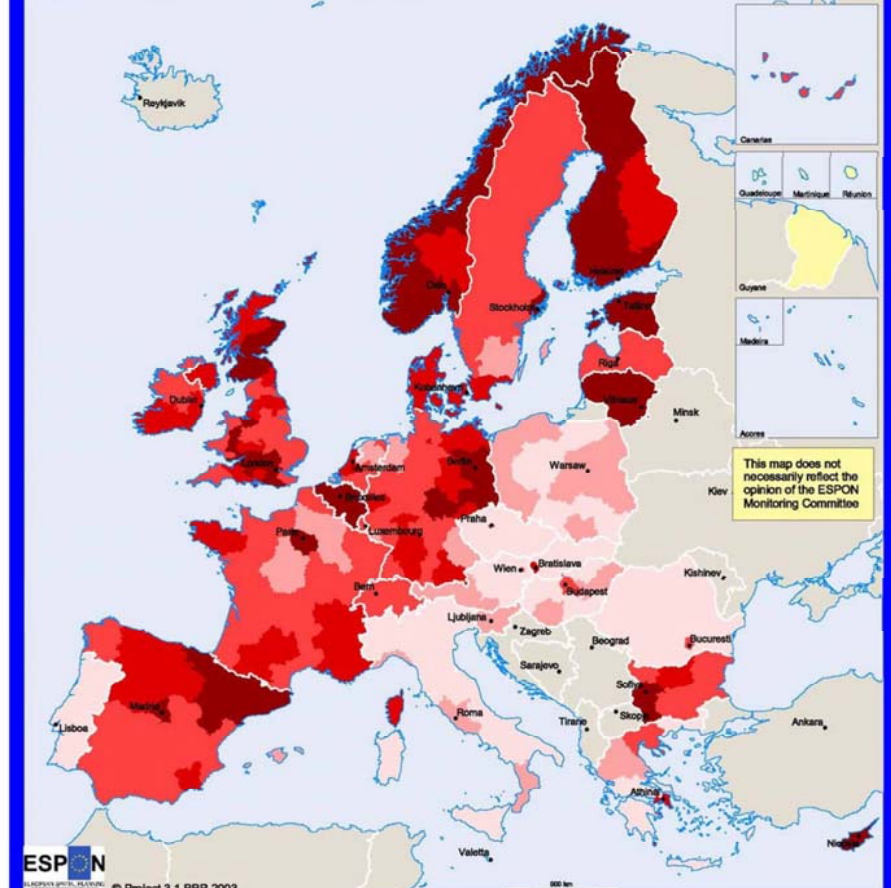
Elaborazioni ERVET su Fonte c



R&D intensity across the EU27 against the EU average, 1999

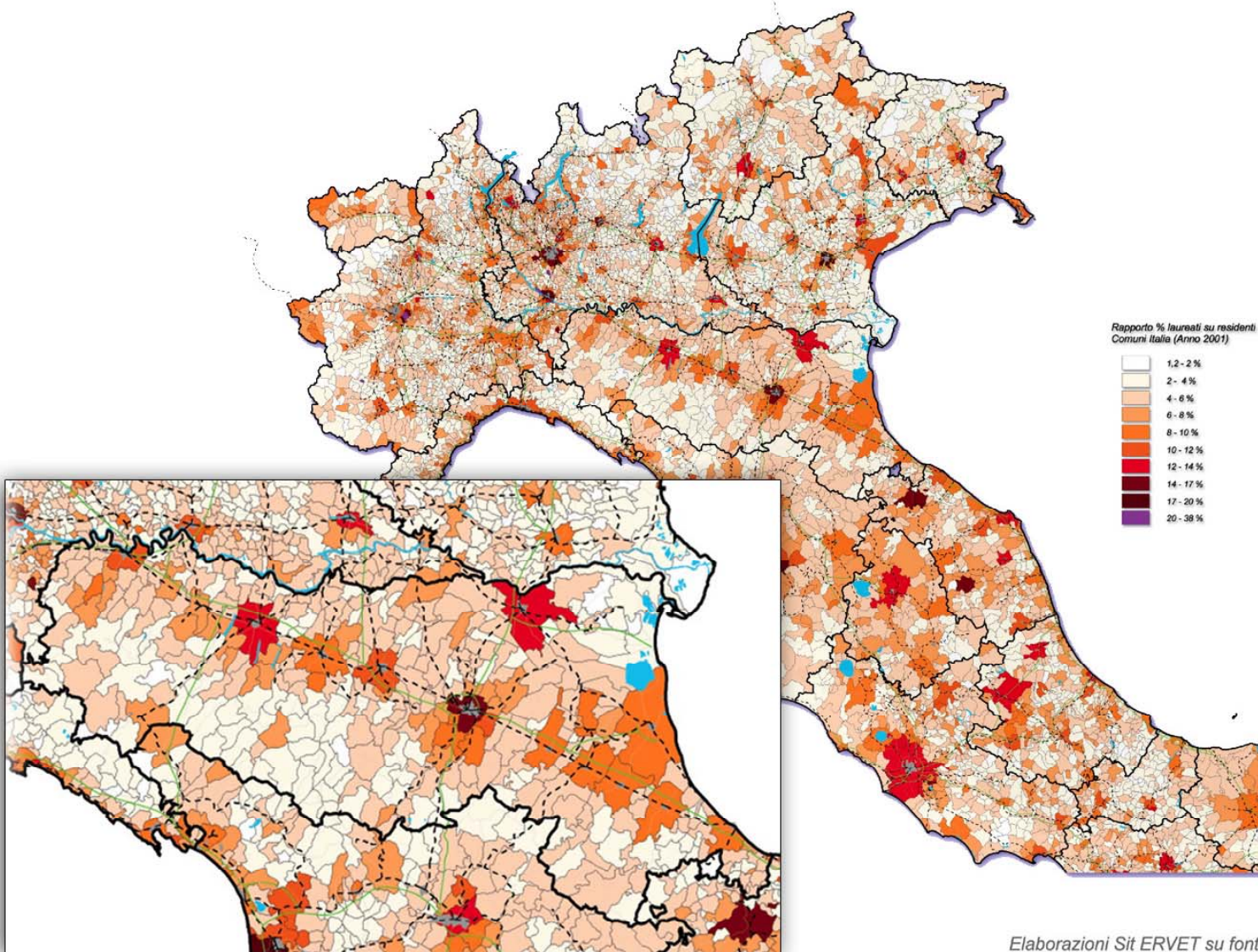


*EU27 Average = 100, excluding Romania, Lithuania, Cyprus, Malta, and Estonia



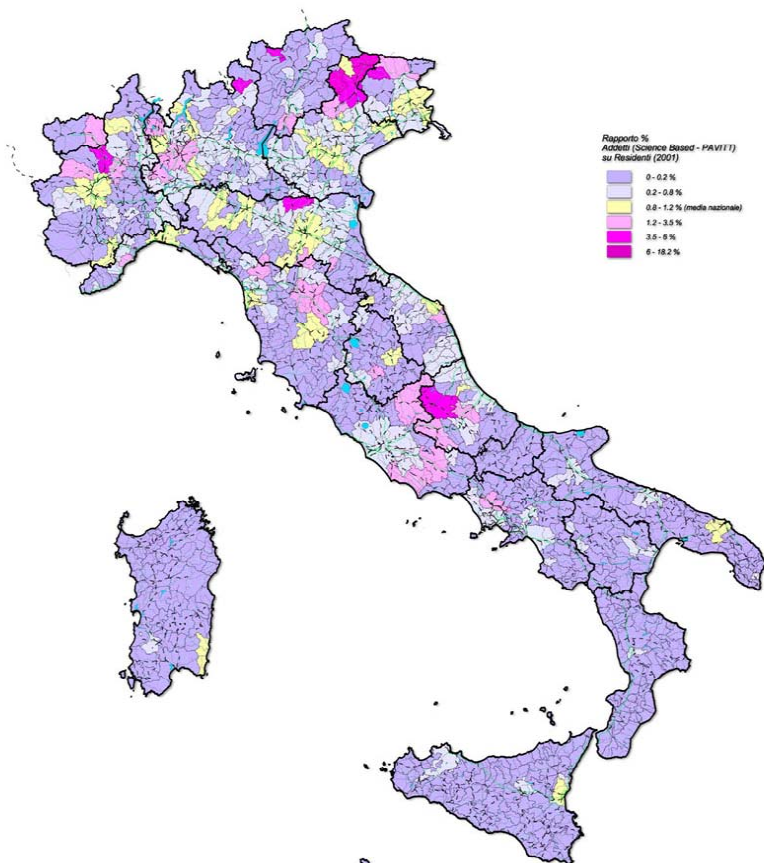
© EuroGeographics Association for the administrative boundaries
Origin of the data: EU15 and CC's: Eurostat labour force survey
Germany: DEB-Data on NUTS 1 level
Source: ESPON Data Base

Rapporto Percentuale (%) **Laureati su Residenti** nei Comuni d'Italia - Anno 2001



Elaborazioni Sit ERVET su fonte

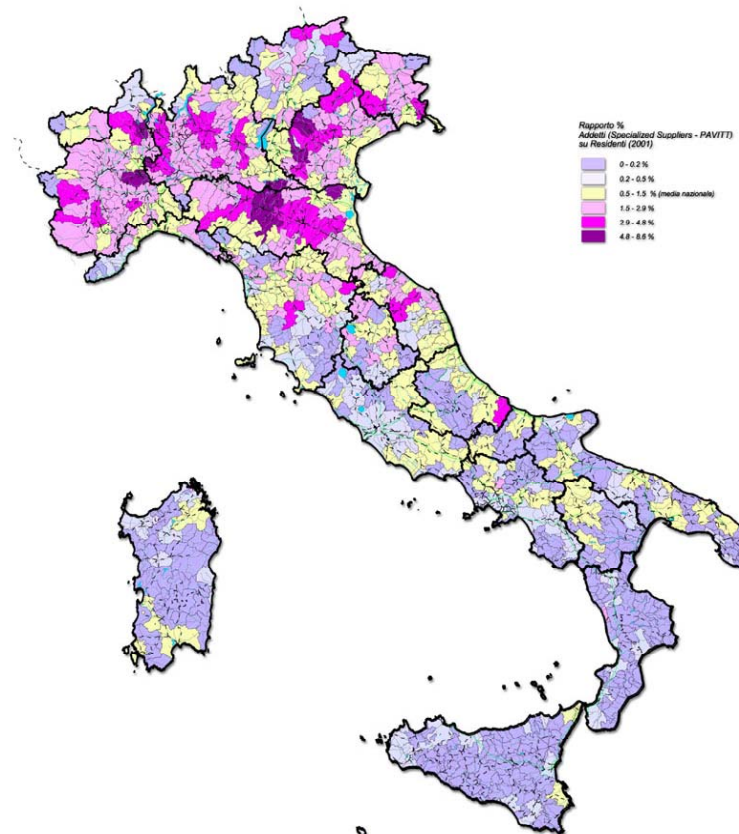
Rapporto tra Addetti - Science Based (PAVITT) e Residenti
Sistemi Locali del Lavoro (SLL - Istat 2001)



Novembre 2005

Elaborazioni Sit ERVET su fonte ISTAT (2001)

Rapporto tra Addetti - Specialized Suppliers (PAVITT) e Residenti
Sistemi Locali del Lavoro (SLL - Istat 2001)



Novembre 2005

Elaborazioni Sit ERVET su fonte ISTAT (2001)



Servizi clinici di genetica medica

H = Hub: A.O. Ferrara;

S = Spoke: A.O. Modena, Bologna e Parma, AUSL Imola, AUSL Rimini.

Laboratori di citogenetica

H = Hub: A.O. Reggio Emilia, AUSL Imola

S = Spoke: A.O. Modena, Ferrara e Bologna, Area Piacenza-Parma, Area Cesena-Forlì-Rimini

Laboratori di genetica molecolare

H = Hub: A.O. Ferrara, Modena, Bologna e Parma

Servizi clinici di genetica oncologica

H = Hub: A.O. Modena

S = Spoke: A.O. Parma, Bologna, Ferrara e AUSL Forlì

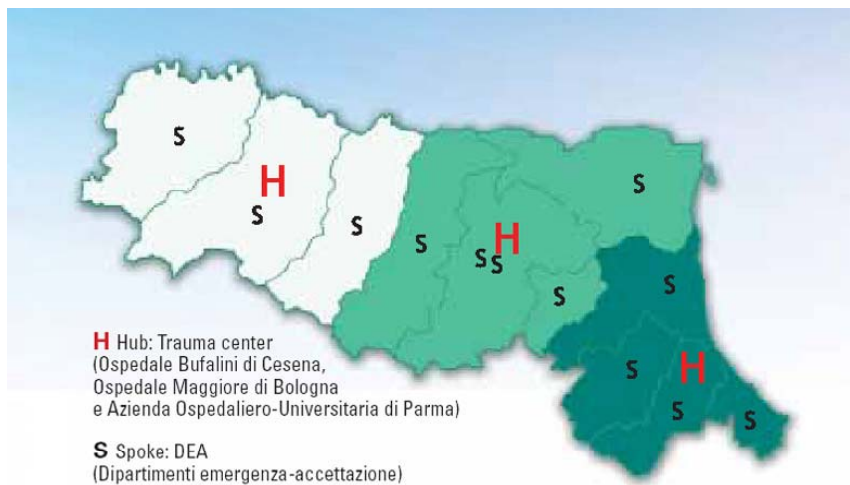


Fig.19 - Rete Hub & Spoke per gravi cerebrolesioni acquisite

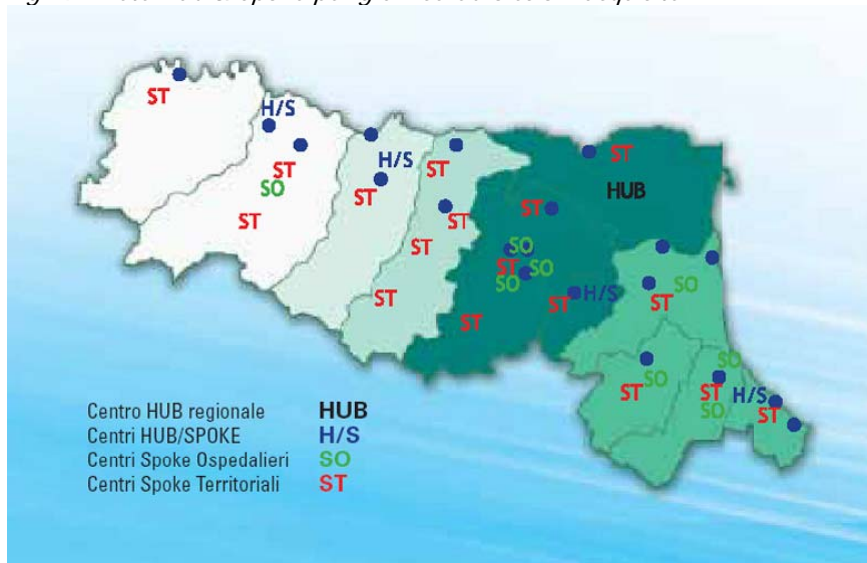


Fig.20 - Rete Hub & Spoke per la cardiologia e la cardiocirurgia

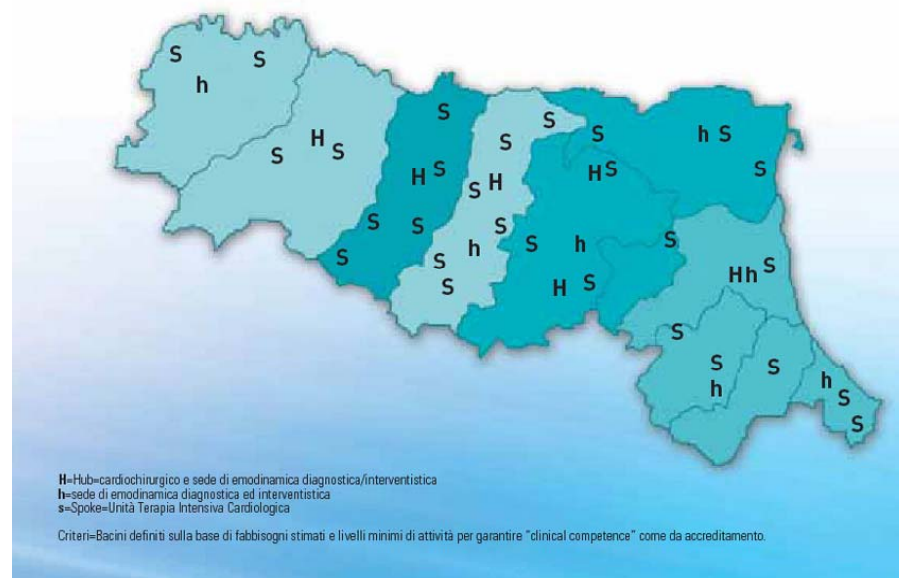
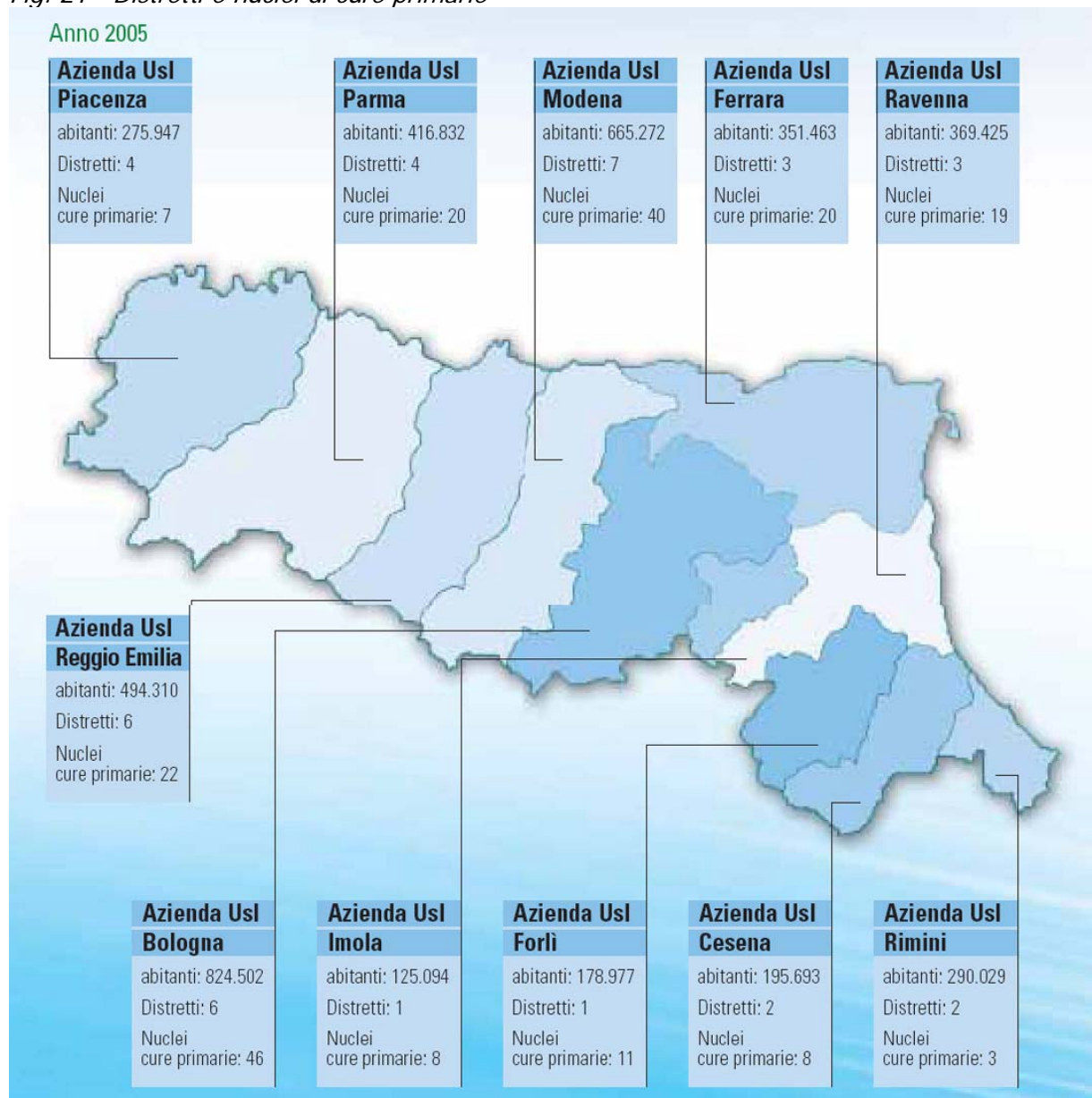
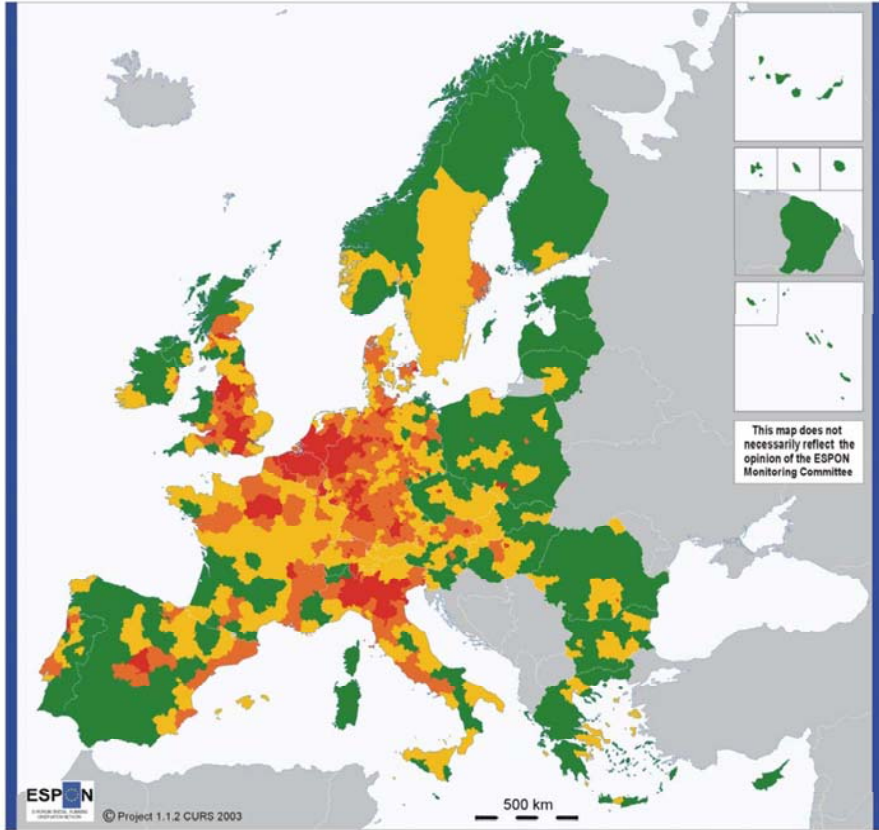


Fig. 21 - Distretti e nuclei di cure primarie





Factor 1 - urban territories

0,74 - 1,52 (328 NUTS3 regions)
0,23 - 0,73 (330)
-0,44 - 0,22 (333)
-8 - -0,43 (338)

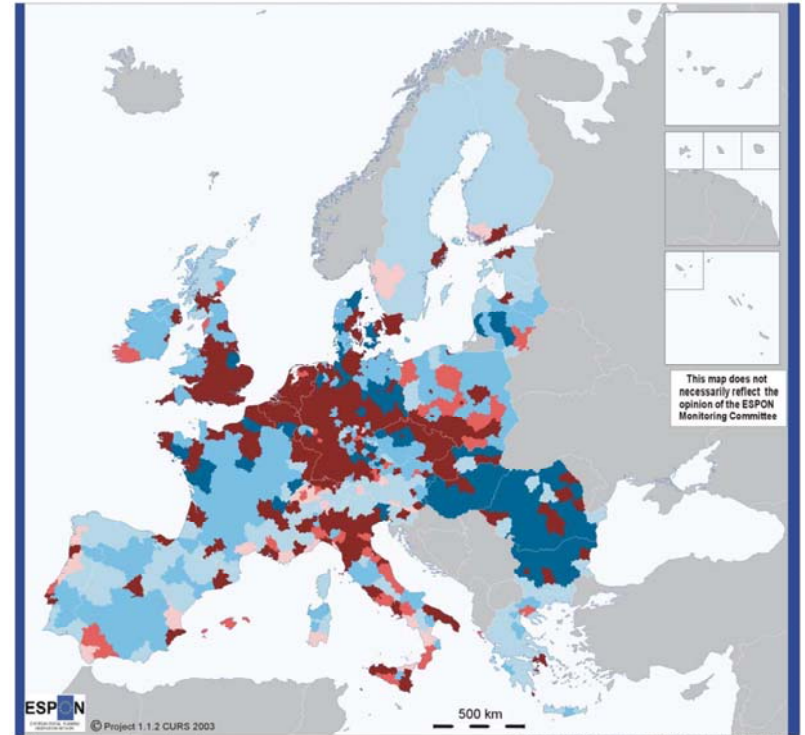
Variables	Legend
Less urbanised territories	
↕	
More urbanised territories	

© EuroGeographics Association for the administrative boundaries

Land cover types:
Origin of data: EEA, Corine Land Cover 90

Other data:
Origin of data: EU15 and CC's: Eurostat
Norway and Switzerland:
National Statistical Offices
Time reference: 1999

Source: ESPON Data Base



Urban-rural typology, based on population density, FUA ranking and land cover

- High urban influence, high human intervention
- High urban influence, medium human intervention
- High urban influence, low human intervention
- Low urban influence, high human intervention
- Low urban influence, medium human intervention
- Low urban influence, low human intervention

The criteria for urban influence:

- Population density above the average (107 inhabitants/km² in EU25+4)
- And/or at least a European level functional urban area (based on typology made by ESPON Action 1.1.1)

Degree of human intervention is estimated through the average shares of land covers (in EU23+3, no data on Cyprus, Malta and Norway):

- High human intervention: at least the share of artificial surfaces above average (3,48%)
- Medium human intervention: at least the share of agricultural land above average (50,36%)
- Low human intervention: only the share of residual land use above average (46,16%)

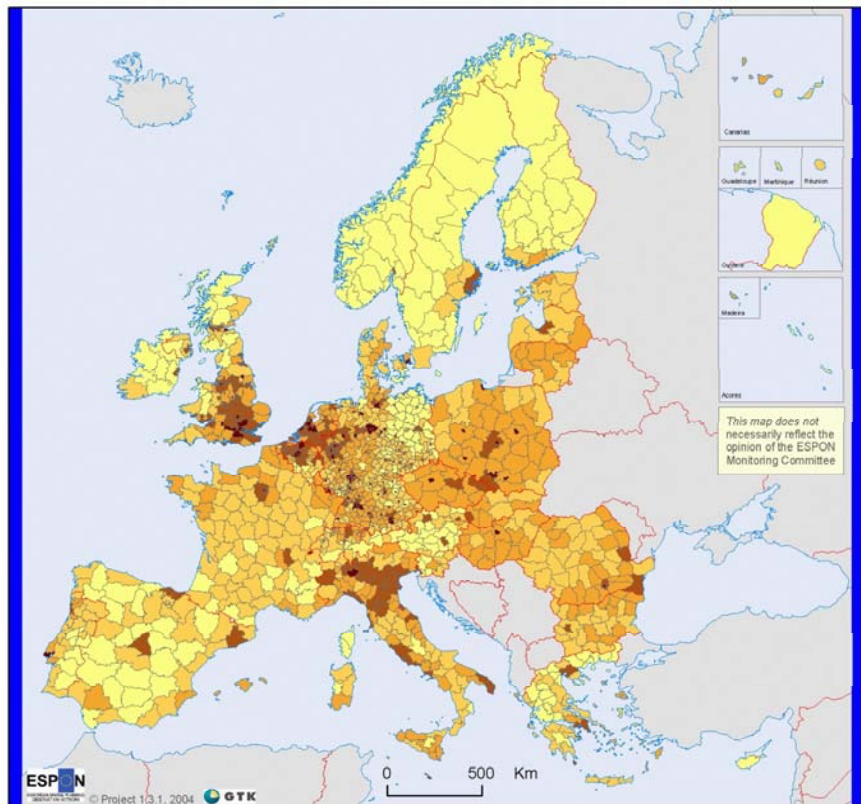
© EuroGeographics Association for the administrative boundaries

Ranking of Functional Urban Areas (FUAs):
Origin of data: EUROSTAT, National Statistical Offices, National experts
Source: Nordregio, ESPON Data Base

Population density:
Origin of data: EU15 and CC's: Eurostat
Norway and Switzerland:
National Statistical Offices
Time reference: 1999

Land cover types:
Origin of data: EEA, Corine Land Cover 90

Source: ESPON Data Base



ESPON
EUROPEAN SPATIAL PLANNING OBSERVATION NETWORK
© Project 1.1.1. 2004



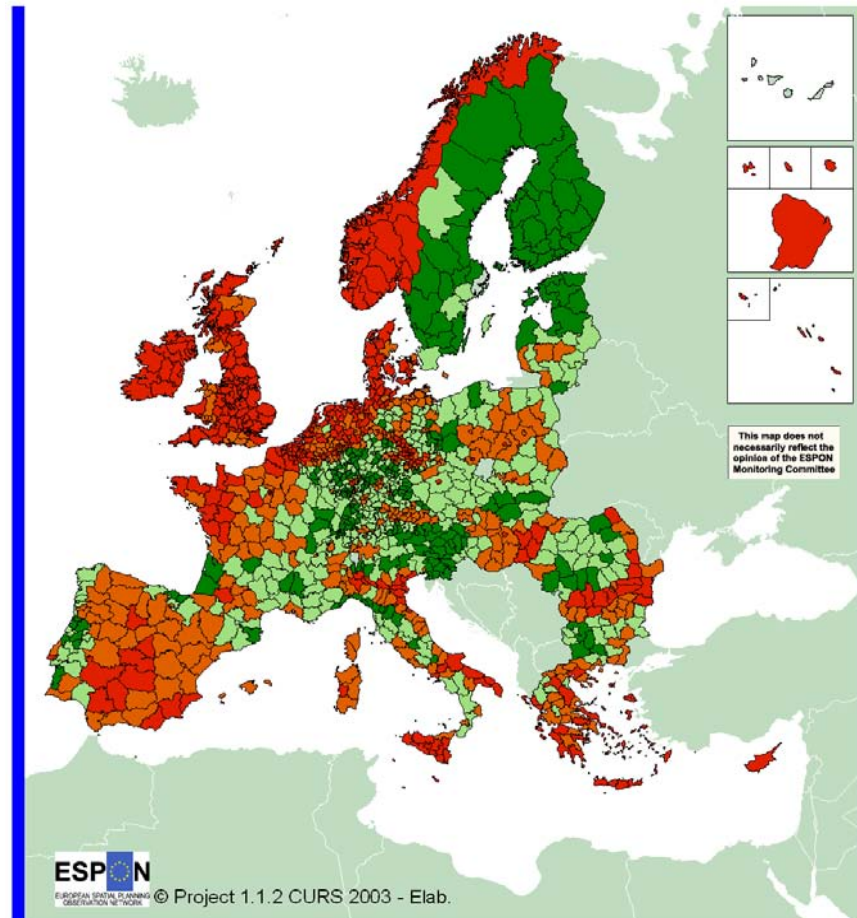
Integrated vulnerability

- I (Low vulnerability)
- II
- III
- IV
- V (High vulnerability)
- Non ESPON space

Origin of the data: © EuroGeographics Association for the administrative boundaries
Population density and GDP Eurostat
Fragmented natural areas CLC90 EEA
National GDP 2003 Eurostat

Source: ESPON Data Base

Degree of integrated vulnerability is based on GDP per capita, population density, national GDP (inverse) and fragmented natural areas equally weighted (30:30:30:10). Remote areas, Norway and Cyprus are missing fragmented natural areas data.



ESPON
EUROPEAN SPATIAL PLANNING OBSERVATION NETWORK

© Project 1.1.2 CURS 2003 - Elab.

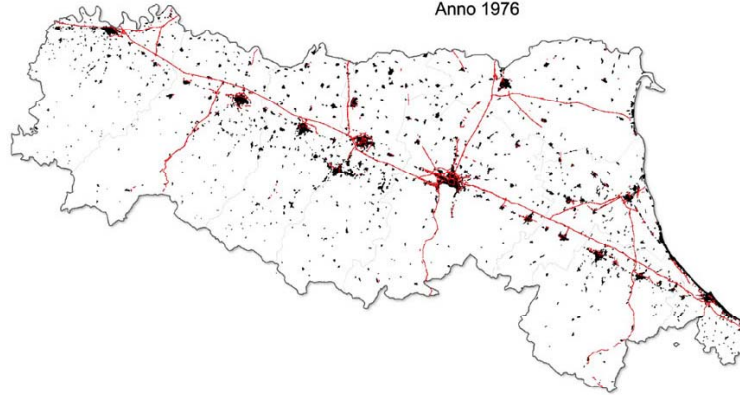
- Forestry**
- 0 - 10.66
 - 10.66 - 25.71
 - 25.71 - 42.7
 - 42.7 - 76.88
 - Espo space nuts 3 all

© EuroGeographics Association for the administrative boundaries

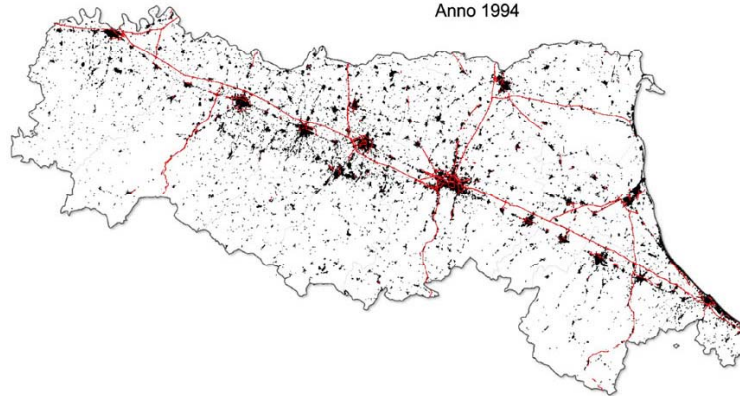
Land cover types:
□ Origin of data: EEA, Corine Land Cover 90
Source: ESPON Data Base

EVOLUZIONE DEL TERRITORIO URBANIZZATO (Periodo 1976 - 2003)

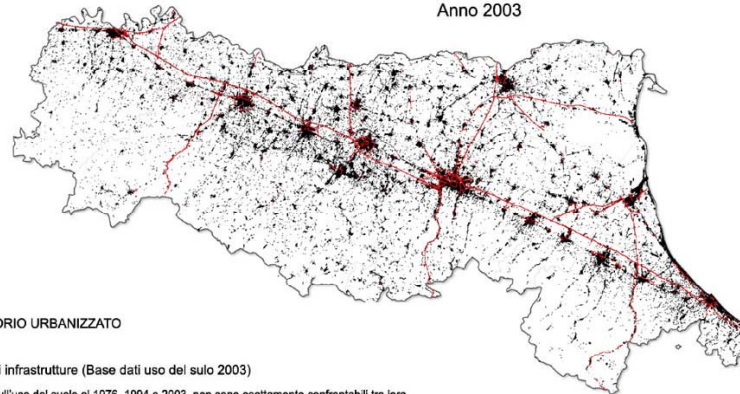
Anno 1976



Anno 1994



Anno 2003



■ TERRITORIO URBANIZZATO

— Principali infrastrutture (Base dati uso del suolo 2003)

Nota: Le basi dati sull'uso del suolo al 1976, 1994 e 2003, non sono esattamente confrontabili tra loro a causa delle diverse metodologie di rilevazione e tecniche utilizzate. In mappa vengono sempre indicate e mantenute le estensioni delle principali infrastrutture rilevate dalla più recente base dati al 2003, in modo da rendere più corretta ed efficace la percezione dell'evoluzione del restante territorio urbanizzato nell'arco di tempo complessivamente analizzato e rappresentato.

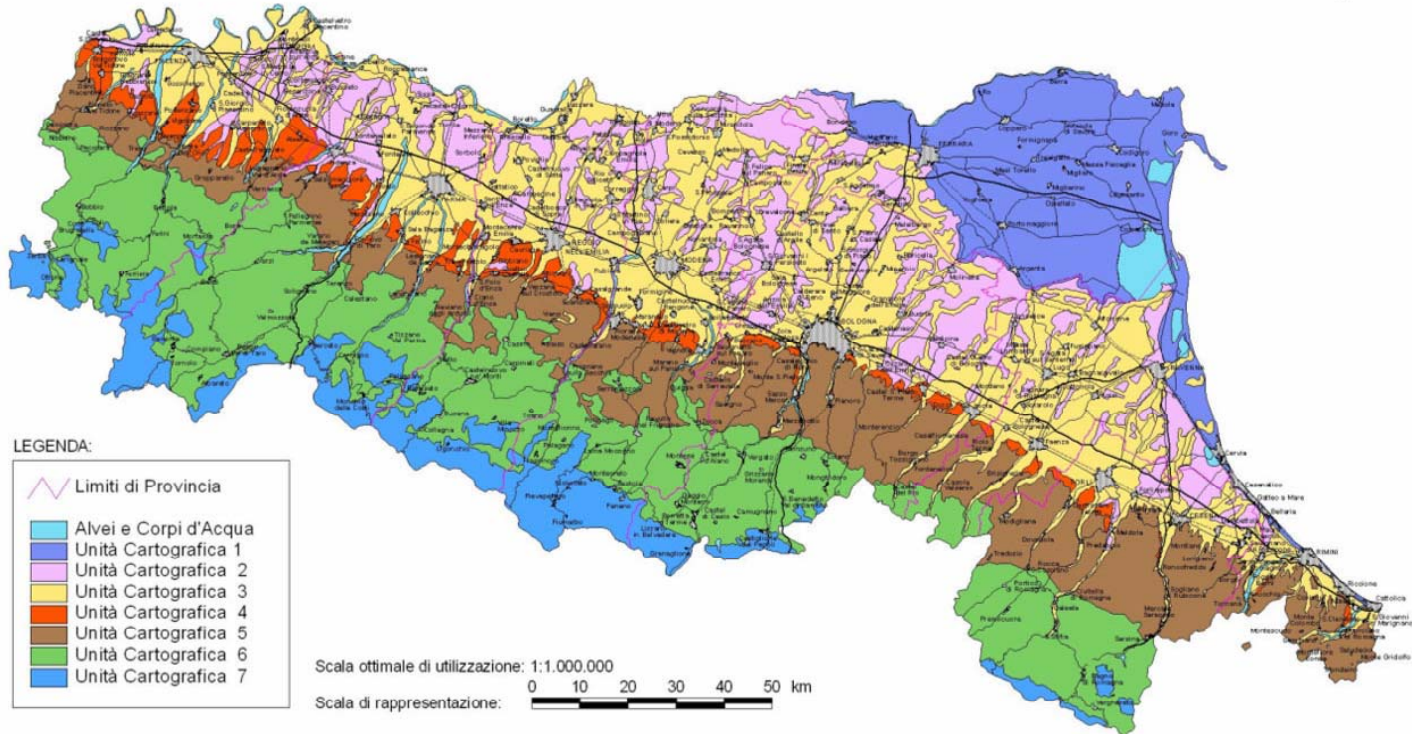
– La rete di ecosotemi idrici e di acque naturali in Emilia-Romagna (i corpi idrici sono indicati in blu, i rii dari sono indicati in azzurro, SIC e ZPS sono indicati in verde più scuro, le restanti aree dei parchi regionali sono ti in verde più chiaro).



CARTA DEI SUOLI DELLA REGIONE EMILIA-ROMAGNA

Livello di Dettaglio: UNITA' CARTOGRAFICHE 1:1.000.000

Regione Emilia-Romagna
Ufficio Pedologico



Carta delle Aree Verdi - Regione Emilia Romagna



Elaborazioni ERVET su Forze della Regione Emilia Romagna